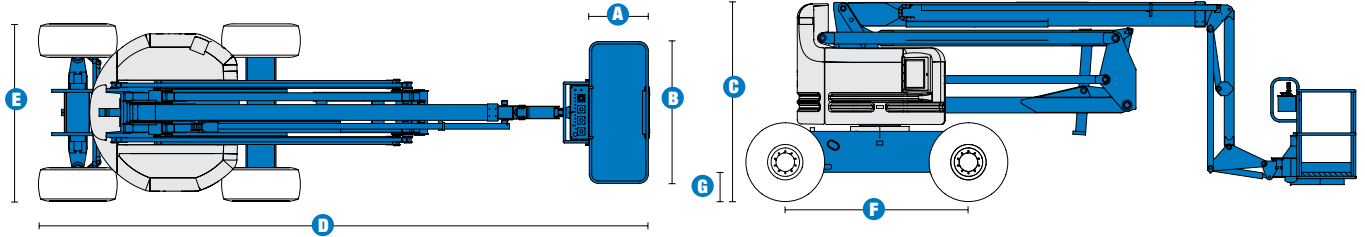


Specifications



MODEL	Z™-60/34	
MEASUREMENTS	Metric	US
Working height maximum*	20.39 m	66 ft 4 in
Platform height maximum	18.39 m	60 ft 4 in
Horizontal reach maximum	11.05 m	36 ft 3 in
Up and over clearance maximum	8.23 m	27 ft
A Platform length	0.91 m	3 ft
B Platform width	2.44 m	8 ft
C Height - stowed	2.69 m	8 ft 10 in
D Length - stowed	8.15 m	26 ft 9 in
E Width	2.46 m	8 ft 1 in
F Wheelbase	2.51 m	8 ft 3 in
G Ground clearance - centre	0.41 m	1 ft 4 in

PRODUCTIVITY		
Lift capacity	227 kg	500 lbs
Platform rotation	180°	180°
Vertical jib rotation	90°	90°
Turntable rotation	360° continuous	
Turntable tailswing	zero	zero
Drive speed - stowed	4.8 km/h	3.0 mph
Drive speed - raised**	1.1 km/h	0.68 mph
Gradeability - 4WD - stowed***	40%	40%
Turning radius - inside	3.04 m	10 ft
Turning radius - outside	6.07 m	19 ft 11 in
Controls	12V DC proportional	
Tyres - RT Lug - Foam filled	385/65 D19.5	

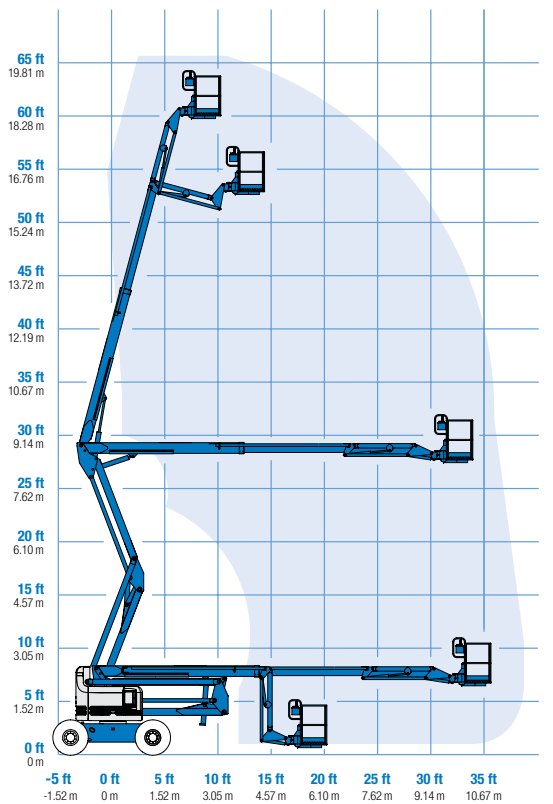
POWER		
Power source	Deutz D2011L03i 3-cylinder diesel 35.8 kW (48 hp)	
Auxiliary power unit	12V DC	12V DC
Hydraulic tank capacity	170.3 L	45 gal
Fuel tank capacity	75.7 L	20 gal

WEIGHT****		
	11,800 kg	26,014 lbs

STANDARDS COMPLIANCE ANSI A92.5, CSA B354.4, CE Compliance, AS 1418.10

* The metric equivalent of working height adds 2 m to platform height. U.S. adds 6 ft to platform height.
 ** In lift mode (platform raised), the machine is designed to operate on firm, level surfaces only.
 *** Gradeability applies to driving on slopes. See operators manual for details regarding slope ratings.
 **** Weight will vary depending on options and/or country standards.

RANGE OF MOTION Z™-60/34



Features

STANDARD FEATURES

MEASUREMENTS

- 20.39 m (66 ft 4 in) working height
- 11.05 m (36 ft 3 in) horizontal reach
- 8.23 m (27 ft) up and over clearance
- Up to 227 kg (500 lbs) lift capacity

PRODUCTIVITY

- 2.44 m (8 ft) steel platform
- 1.83 m (6 ft) jib boom with 90° working range
- 4WD
- Full-time active oscillating axle
- Rough terrain foam-filled tyres
- Self-leveling platform
- Hydraulic platform rotation
- Fully proportional controls
- Drive enable
- Horn
- Hour meter
- Tilt alarm
- 360° continuous turntable rotation
- Locking turntable covers
- Zero tailswing
- Positive traction drive
- 2 speed wheel motors
- Engine gauge package
- Thumb rocker steer
- Alarm package
- Dual flashing beacons

POWER

- 12 V DC auxiliary power
- Deutz diesel 35.8 kW (48 hp)
- Engine protection package
- Anti-restart engine protection
- Auto engine fault shutdown
- Intake air heater

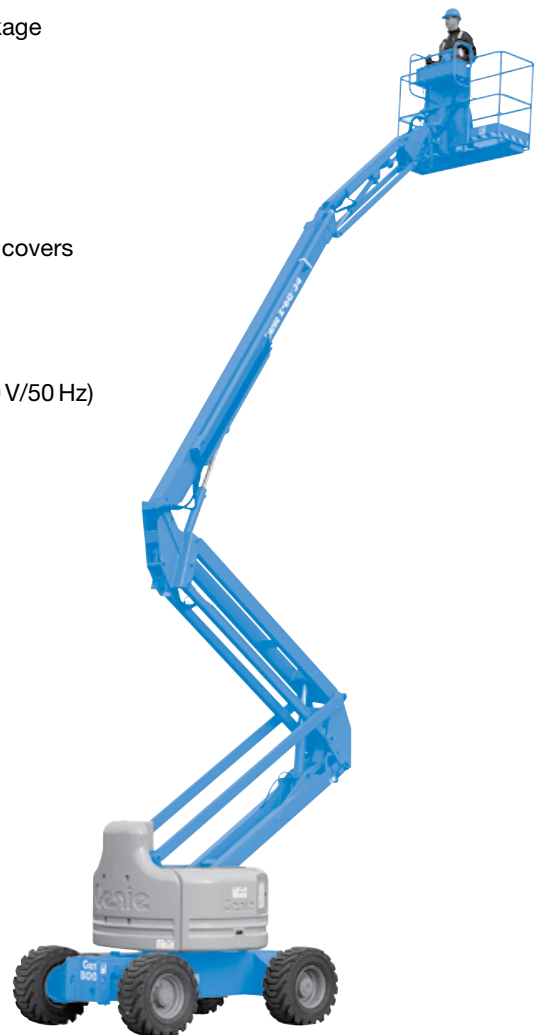
OPTIONS & ACCESSORIES

PRODUCTIVITY

- Platform swing gate
- Half mesh platform inserts with swing gate
- Platform top auxiliary rail
- Hydraulic oil cooler
- Air line to platform
- Fire resistant hydraulic oil
- Biodegradable hydraulic oil
- Deluxe aircraft protection package
- Basic hostile environment kit
- Deluxe hostile environment kit
- Tool tray
- Fluorescent tube caddy
- Platform work lights
- Front driving lights
- Lockable platform control box covers
- 1.83 m (6 ft) steel platform

POWER OPTIONS

- 240 V power to platform
- 7 kVA hydraulic generator (240 V/50 Hz)
- Cold Weather Packages
- Retained key selector switch



Genie Australia – Toll free number 1800 788 633

Brisbane (Head Office)
33 Kimberley Street
Darra QLD 4076

Sydney
74 Glendenning Road
Glendenning NSW 2761

Melbourne
374 Hammond Road
Dandenong VIC 3175

Perth
126 Sheffield Road
Welshpool WA 6106

Genie United States Distributed by:

18340 NE 76th Street
P.O. Box 97030
Redmond, Washington
98073-9730

Effective Date: April 2012. Product specifications and prices are subject to change without notice or obligation. The photographs and/or drawings in this document are for illustrative purposes only. Refer to the appropriate Operators' Manual for instructions on the proper use of this equipment. Failure to follow the Operators Manual when using our equipment or to otherwise act irresponsibly may result in serious injury or death. The only warranty applicable to our equipment is the standard written warranty applicable to the particular product and sale and we make no other warranty, express or implied. Products and services listed may be trademarks, service marks, or trade names of Terex Corporation, Terex South Dakota, Inc., and/or their subsidiaries in the USA and other countries. All rights reserved. Terex is a registered trademark of Terex Corporation in the USA and many other countries. Genie is a registered trademark of Terex South Dakota, Inc. in the USA and many other countries. ©2009 Terex Corporation.